

Ectopic Opening of the Common Bile Duct into the Third Portion of the Duodenum

Hamrerras I*, Ballati A, Elabbassi T and Lefriyekh MR

Department of General Surgery, University Hospital Center Ibn Rochd, Faculty of Medicine and Pharmacy, Hassan II University, Casablanca, Morocco

*Corresponding Author: Hamrerras I, Department of General Surgery, University Hospital Center Ibn Rochd, Faculty of Medicine and Pharmacy, Hassan II University, Casablanca, Morocco, Email: issamhamrerras@yahoo.fr

Citation: Hamrerras I, Ballati A, Elabbassi T and Lefriyekh MR (2020) Ectopic Opening of the Common Bile Duct into the Third Portion of the Duodenum. Stechnolock J Case Rep 1: 8

Copyright: © 2019 Bando H. This is an open-access article distributed under the terms of Creative Commons Attribution License, which permits unrestricted use, distribution, and reproduction in any medium, provided the original author and source are credited.

ABSTRACT

We report the case of a 56-year-old lady patient, without past medical history or surgical intervention, Admitted for generalized jaundice and pain in the right hypochondrium, abdominal ultrasound showed biliary dilation on choledochal stones, confirmed on MRI with evidence of an ectopic opening of the common bile duct and the wirsung canal at the third portion of the duodenum, with a connection of both biliary and main pancreatic ducts by an acute angle (Figure 1), the surgical procedure consisted of an anastomosis of the common bile duct in the duodenum. Abnormalities of the pancreatic biliary junction are most often due to a fusion anomaly between the biliary and pancreatic ducts, and ectopic opening of the common bile duct (CBD) are rare congenital malformation. It has been reported that the CBD can terminate at anomalous sites, including the third portion of the duodenum. Different diseases related to biliary pathway are diagnosed clinically and confirmed by various noninvasive as well as invasive procedures, such as Magnetic Resonance Imaging (MRI), and Endoscopic retrograde cholangio pancreatography (ERCP). Abnormalities in the pancreatic biliary junction increase the risk of biliary tract cancer. The distal variation of termination of common bile duct should also serve as a danger signal in those cases where common bile duct is blocked by stone or tumor. In such cases the surgeon should proceed with caution so that a false passage or leakage of ducts will not be made. Therefore, it is very important to have a thorough knowledge about the anatomy of variations of terminations of common bile duct in successful detection and proper treatment thereby decreasing morbidity and mortality rates during hepatobiliary surgery.

Keywords: Ectopic opening of the Common Bile duct; Pancreatic Biliary junction; Third portion of the duodenum

Diagnosis

Ectopic opening of the common bile duct into the third portion of the duodenum

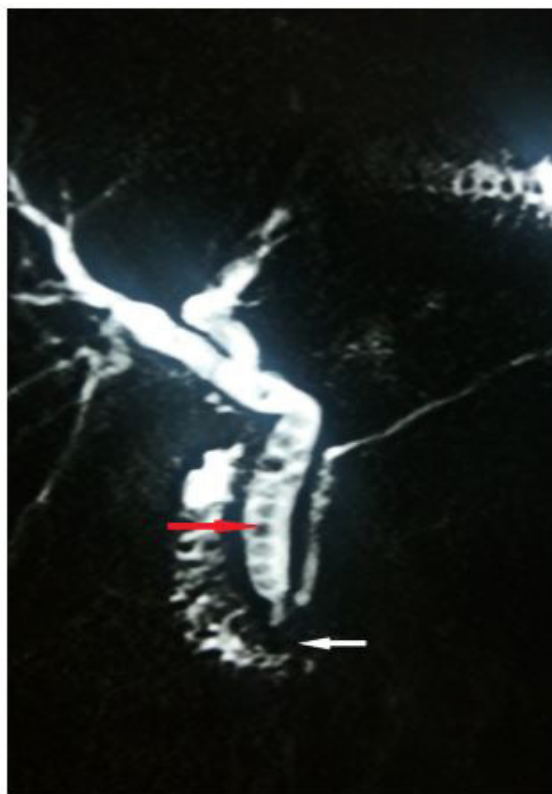


Figure 1: MRI coronal section: Acute pancreatic biliary junction into the third portion of the duodenum (white arrow) with biliary dilation on choledochal stones (Red Arrow)